

The background of the entire image is a photograph of a modern city skyline at dusk or dawn. Several tall, glass-clad skyscrapers are visible, with some construction cranes in the background. The sky is a mix of orange, yellow, and blue. In the top right corner, there are several overlapping geometric shapes in shades of green and blue, creating a modern, architectural feel.

**EBM**  
ENGINEERING CO.

# **Interior Architectural Division**

*Precision Built. Made to Endure*





# WHO WE ARE

*Expert solutions proven by experience*

**EBM's Interior Architectural Division** is led by a team with more than twenty years of experience in architectural systems across the Middle East and beyond. We have worked on some of the region's most demanding projects, giving us a clear understanding of what it takes to deliver systems that are compliant, practical, and built to last.

We do more than supply products. We provide guidance, technical expertise, and support through every stage of a project, from design to installation and handover. By combining international product quality with regional project knowledge, we deliver solutions that clients can rely on for long-term value.




# Solutions at a Glance


*Our core systems at a glance*



Expansion  
Joint Covers



Wall Protection  
Systems



Solar Panel  
Systems



Vinyl  
Flooring



Entrance Matting  
Systems



Flooring  
Accessories



Window  
Treatment  
Coverings



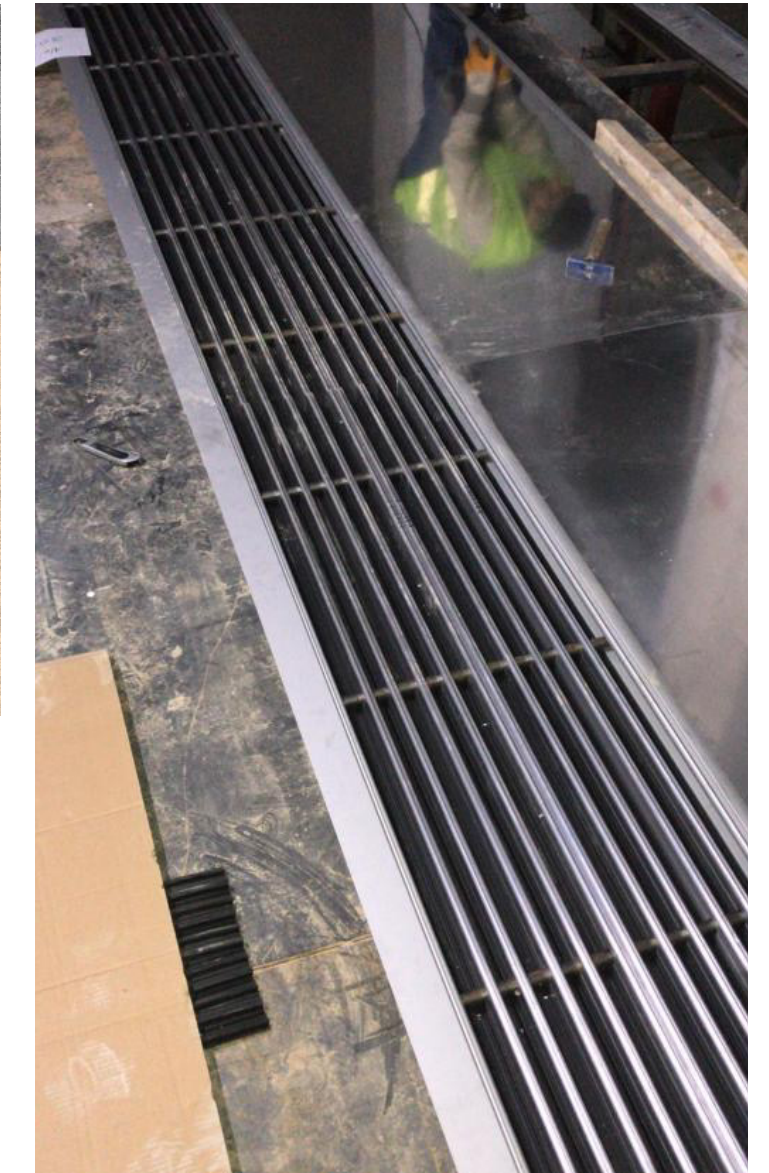
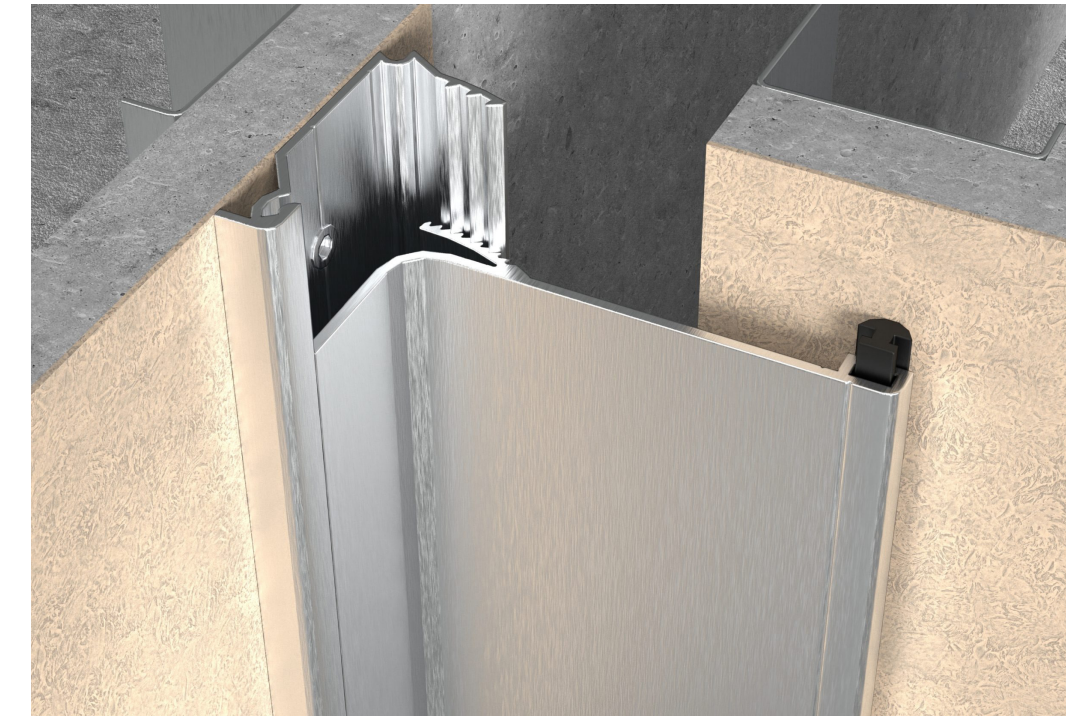
# Expansion Joint Cover Systems

*Engineered for movement,  
designed for strength*

Every building moves. Our expansion joint cover systems absorb that movement while protecting surrounding finishes. They keep floors, walls, and ceilings safe from thermal shifts, seismic loads, and heavy traffic while preserving a seamless look.

## Key Features

- Profiles for floors, walls, and ceilings
- Seismic, heavy-duty, and fire-rated options
- Works with tile, stone, vinyl, and carpet finishes
- Low sightlines for safe, discreet design
- Proven reliability in transport, healthcare, and commercial projects





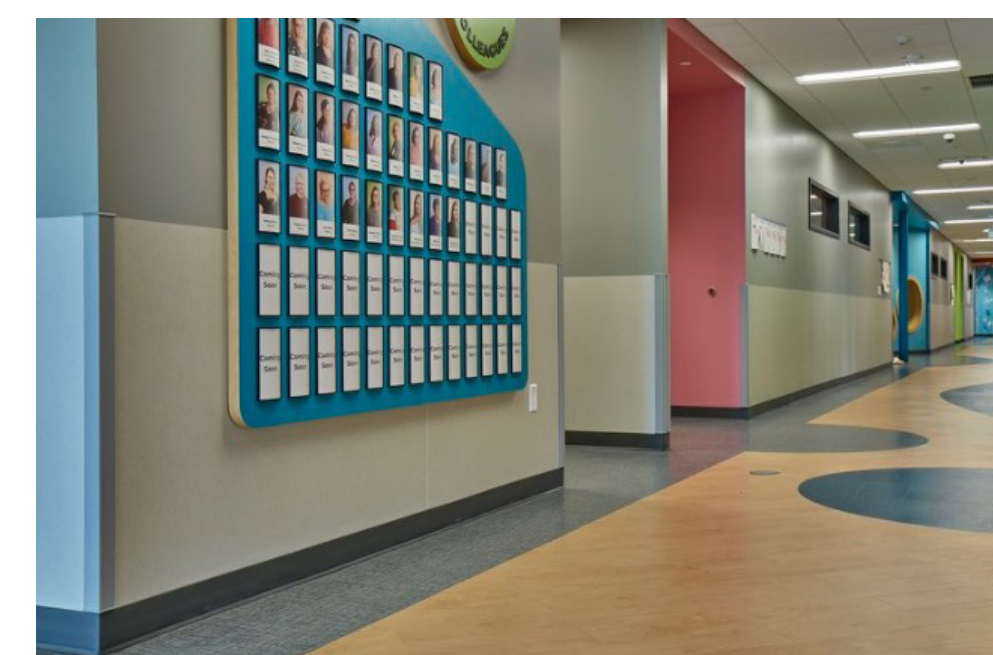
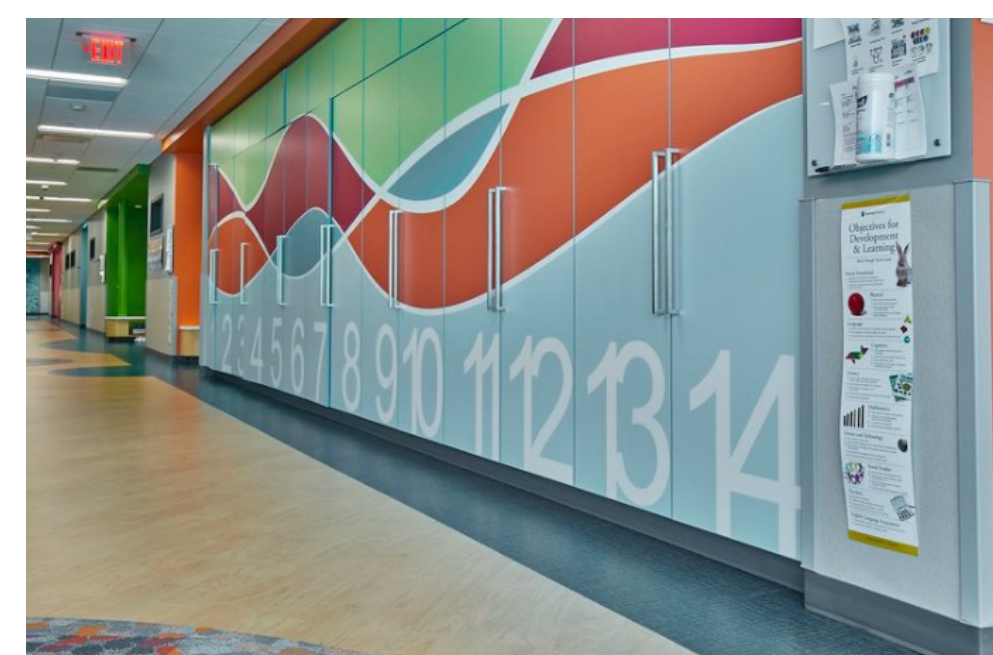
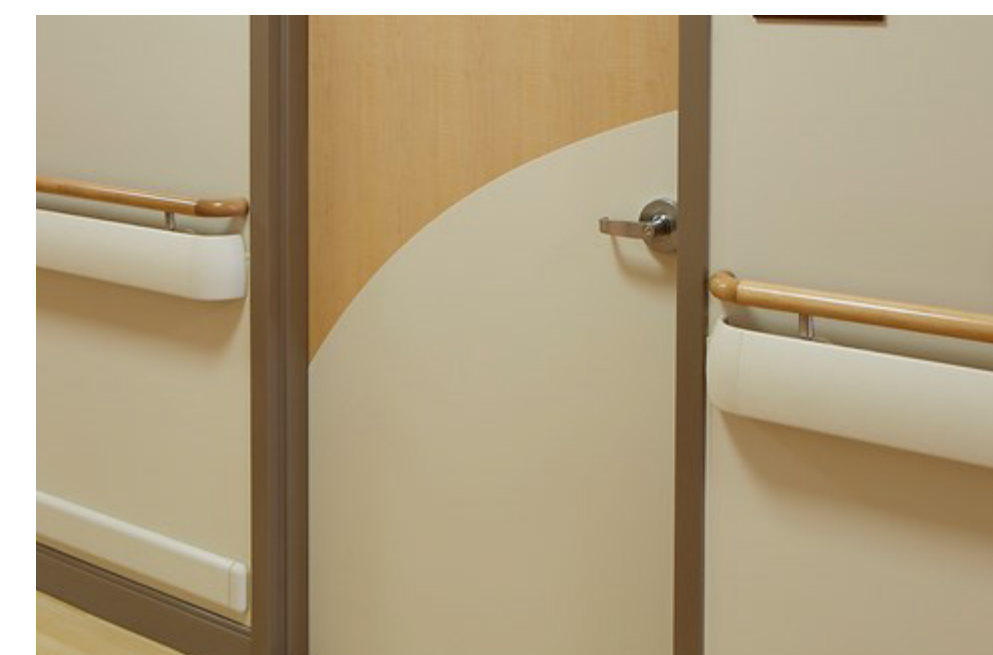
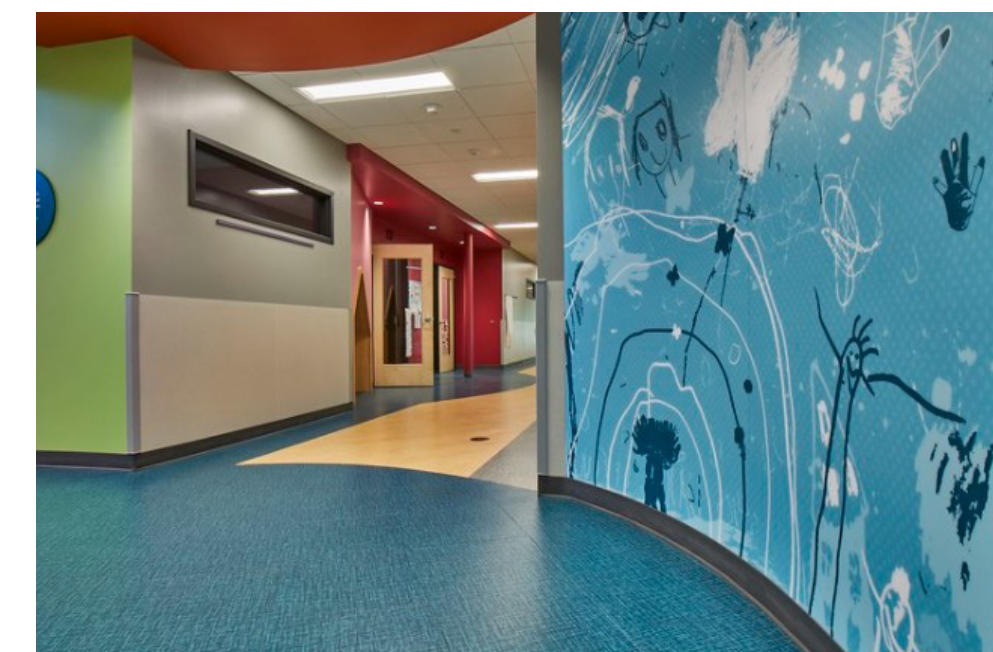
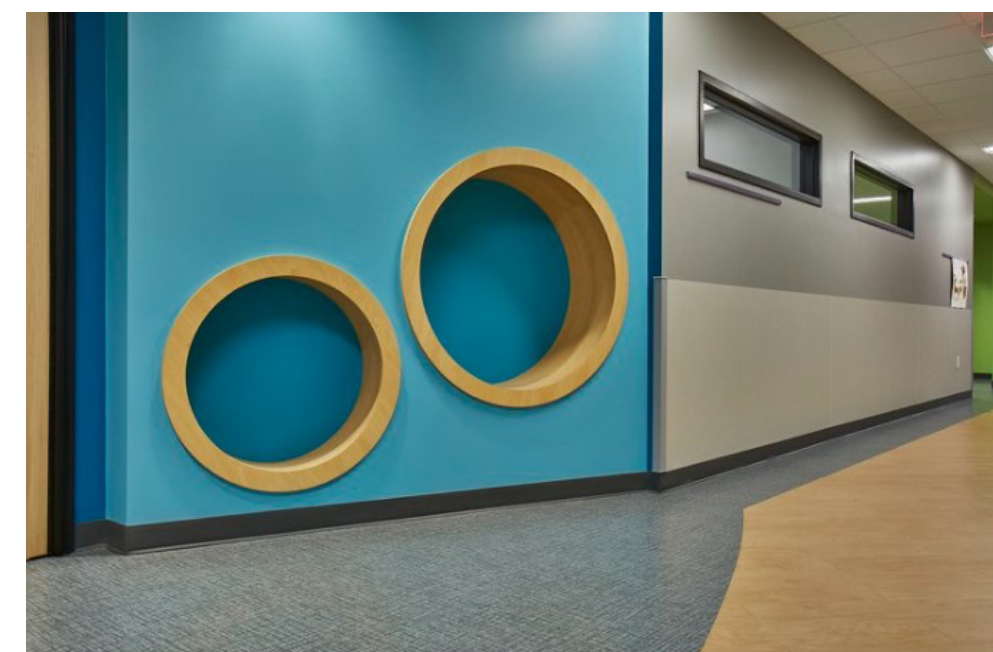
# Wall Protection Systems

*Hygiene built into every surface*

In high-traffic environments, every surface matters. Our wall protection systems defend against daily impact while supporting hygiene and safety standards. From corridors to patient rooms, they combine strength with easy-to-clean finishes.

## Key Features

- Impact-resistant for busy areas
- Hygienic surfaces, easy to clean
- Sheets, corner guards, crash rails, and handrails
- Colours and textures to suit design schemes
- Durability that lowers long-term maintenance costs





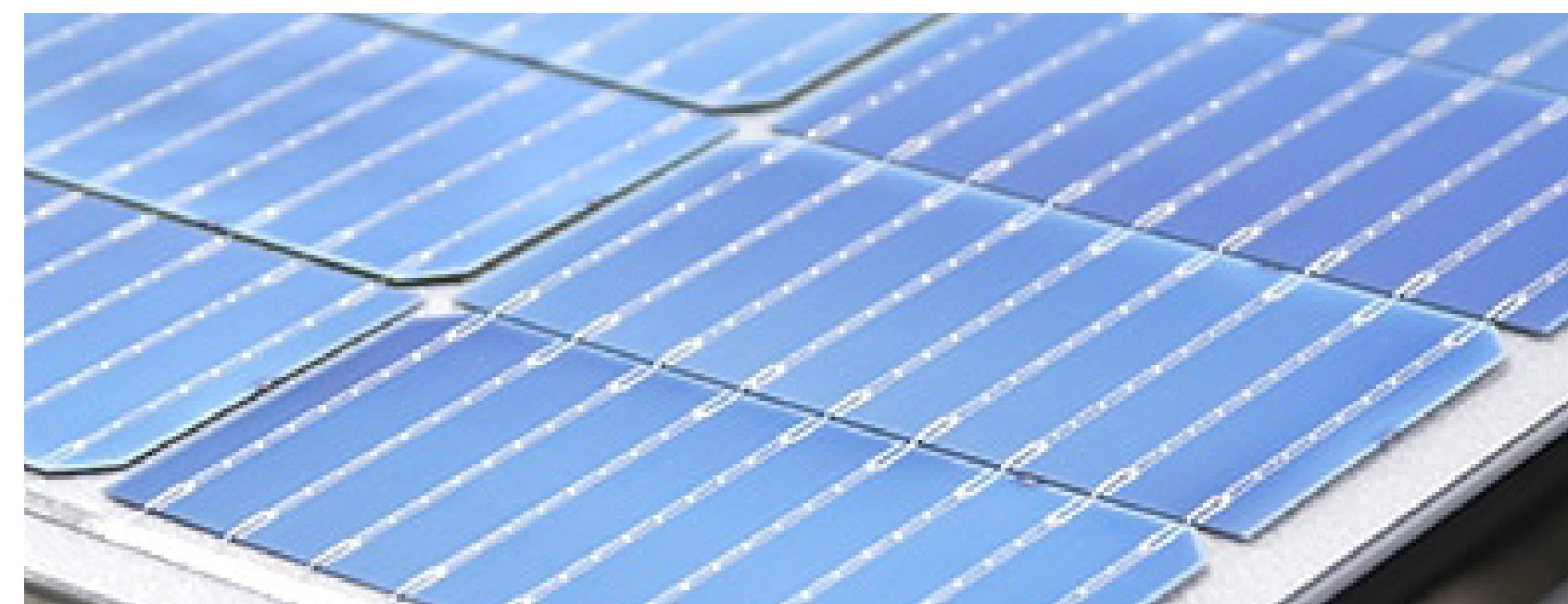
# Solar Panel Systems

*Powering tomorrow's buildings*

Energy is central to modern design. Our solar systems provide reliable performance in harsh climates, cutting operating costs while supporting sustainability goals. They are scalable, adaptable, and built for long-term returns.

## Key Features

- High-efficiency modules for local conditions
- Scalable for residential, commercial, and public use
- Low maintenance, long lifespan
- Cuts energy costs and carbon footprint
- Integrates with new or existing projects





# Vinyl Flooring

*Performance with style built in*

Floors carry the weight of a building's design and daily use. Our vinyl flooring offers durability and safety while creating attractive, comfortable interiors.

## Key Features

- Slip-resistant and safe underfoot
- Acoustic comfort to reduce noise
- Easy to maintain, long wear life
- Decorative and heavy-duty options
- Wide range of styles and finishes





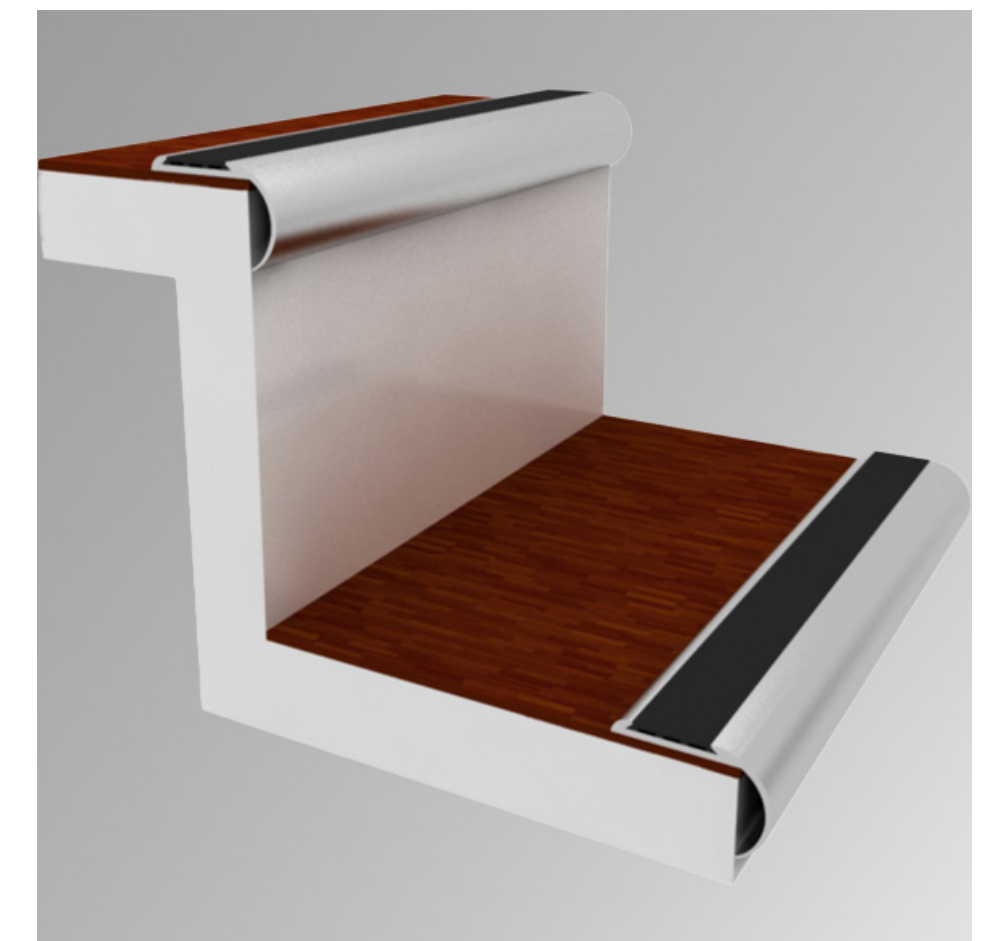
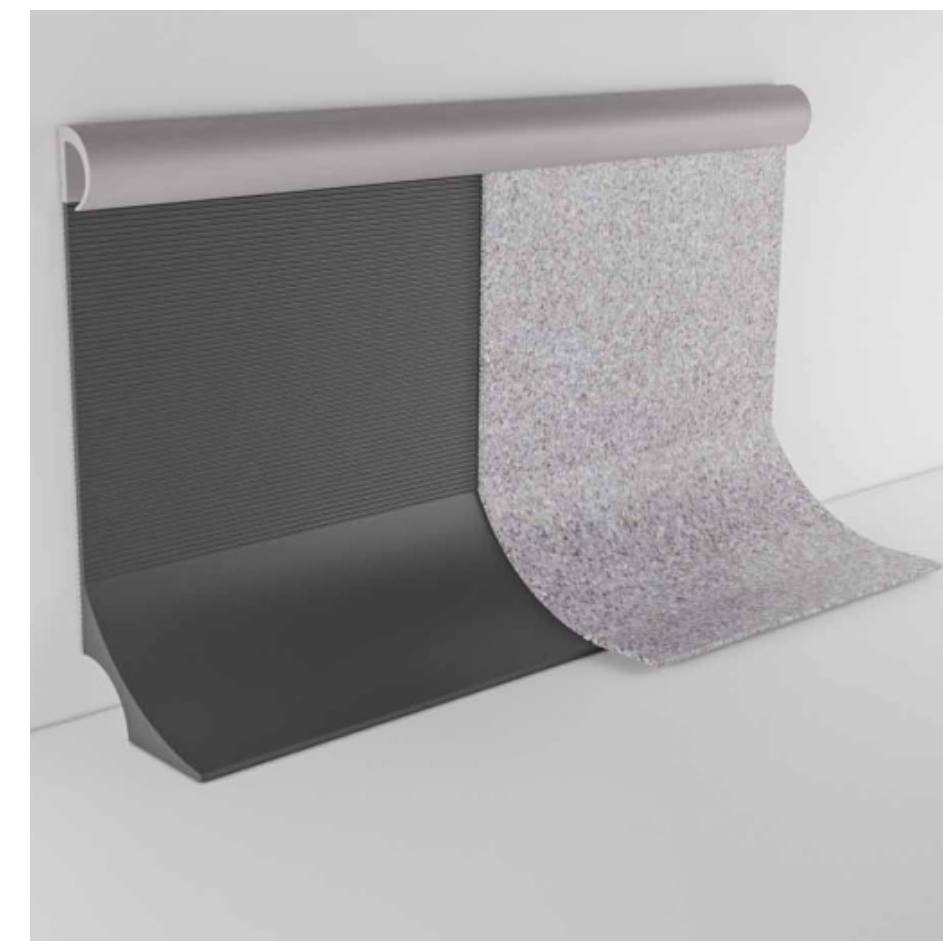
# Flooring Accessories

*Finishing touches that make every floor complete*

Small details make a big difference. Our range of flooring accessories adds safety, performance, and design continuity to every project — from high-traffic interiors to refined commercial spaces.

## Key Features

- **Stair Nosing:** aluminum and PVC profiles for slip resistance and visual contrast
- **Control Joints:** durable profiles that accommodate movement between floor sections
- **Skirting:** PVC or aluminum profiles for a clean wall-to-floor transition. Compatible with tile, vinyl, stone, and epoxy finishes
- Available in a variety of finishes and sizes to suit project requirements





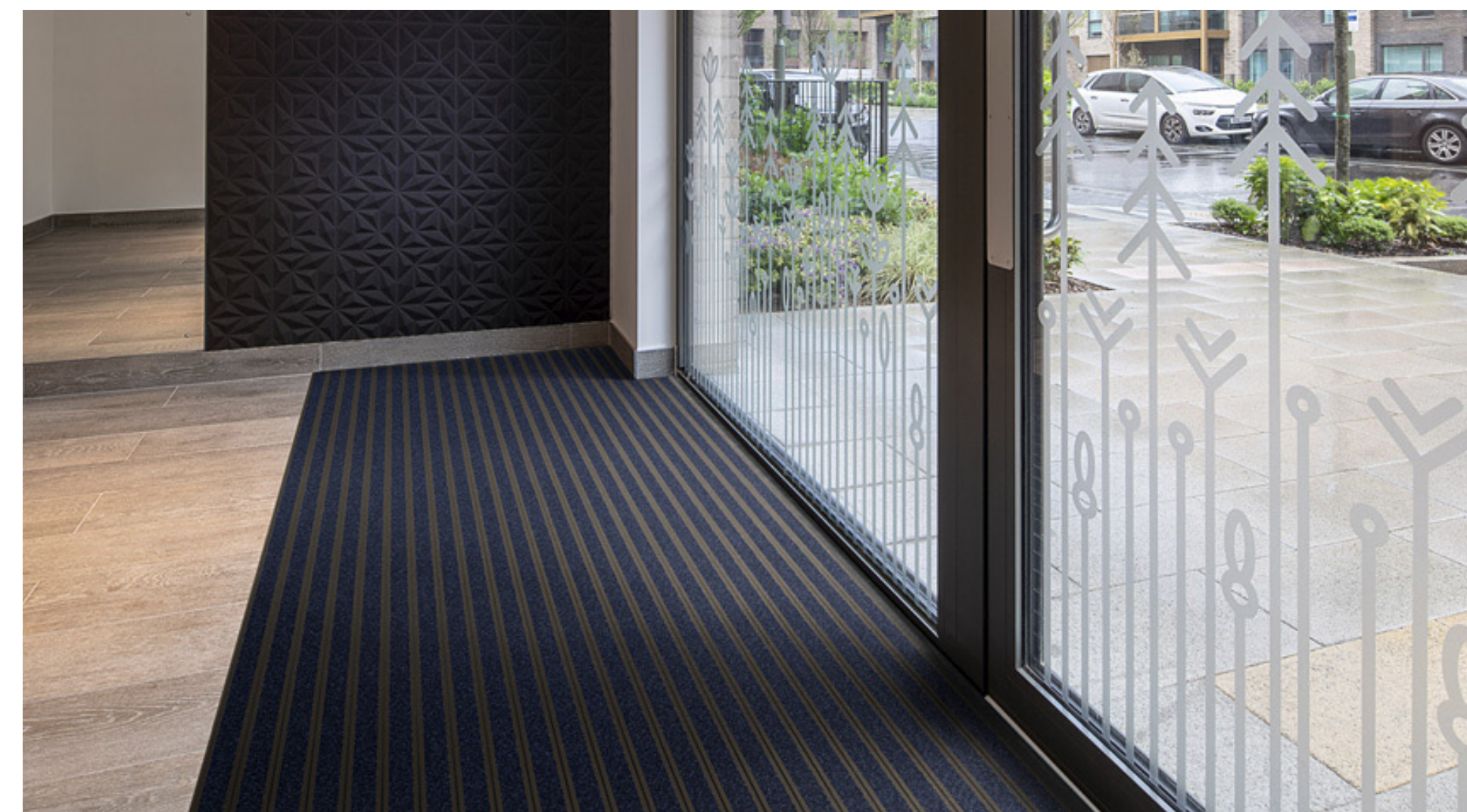
# Entrance Matting Systems

*First impressions  
built to last*

Entrances face the toughest wear. Our matting systems stop dirt and moisture at the door, protecting floors, reducing cleaning, and keeping spaces safe and presentable.

## Key Features

- Handles heavy footfall and wheeled traffic
- Slip-resistant in wet conditions
- Cuts long-term cleaning costs
- Custom sizes and finishes
- Proven in airports, malls, offices, hospitals





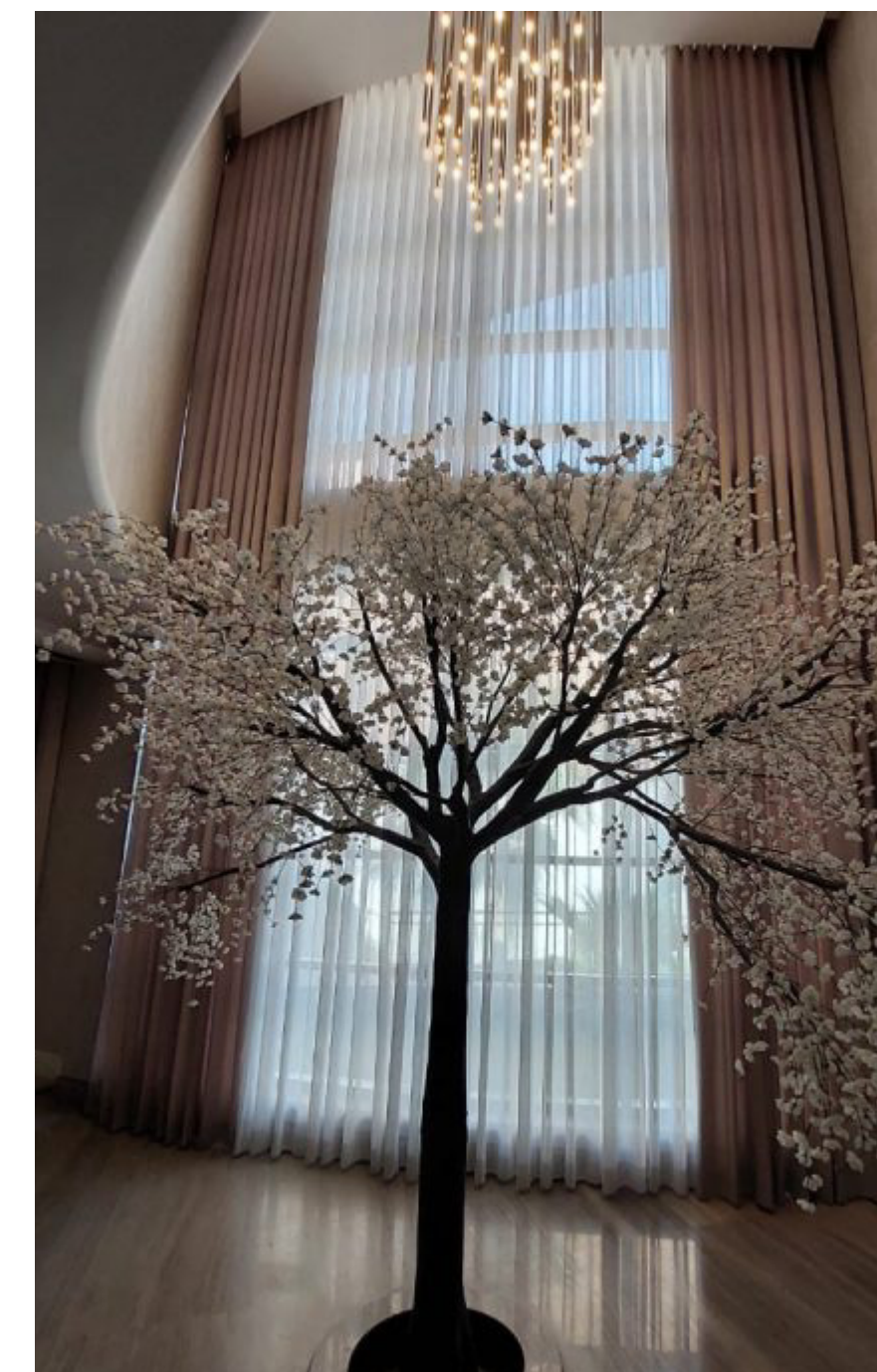
# Window Treatment Coverings

*Control light, privacy,  
and design with ease*

From hospitals to hotels, our window treatment solutions balance functionality with design. We supply both manual and motorised systems, including roller blinds, cubicle curtains, and custom treatments for commercial and healthcare projects. Our fabrics are tested for hygiene, durability, and performance, ensuring solutions that last.

## Key Features

- Manual and motorised roller blinds
- Cubicle curtain systems for healthcare applications
- Wide choice of fabrics and finishes (antimicrobial, blackout, decorative)
- Designed for privacy, shading, and aesthetic appeal
- Tested to meet performance and hygiene standards





# Sectors We Serve

*Trusted across key industries*

## Healthcare



## Education



## Retail & Commercial



## Hospitality



## Transport Hubs





# Why Choose EBM

## *The EBM Advantage*

Choosing the right partner is as important as choosing the right product. At EBM we combine experience, global partnerships, and regional knowledge with a customer-first approach.



Proven systems trusted across GCC projects



A team with more than twenty years of expertise



Customer centric – practical solutions that fit real project needs



Access to leading international products



Support from design through to aftercare



Systems tested for GCC standards, climate, and compliance

### Our commitment

Working with EBM means smoother delivery, less risk, and solutions that perform. Above all, it means having a partner who understands your challenges and works with you to solve them.



# Case for Trust

*Proven reliability, recognized standards*





# Our Branches





---

**Ready to get  
in touch with us**

**LET'S MAKE SOMETHING  
GREAT TOGETHER!**





### **Saudi Arabia HQ:**

3919 Makkah Al Mukarramah Rd. - Ar Rabwah Dist.  
Unit No 8535 - 12813 ,06, Riyadh - Saudi Arabia  
+966 1 2920083 / +966 56 424 8924  
[info@ebmksa.com](mailto:info@ebmksa.com)

